

Data Sheet

Bevliner™ Housings

Sanitary filter housing design that meets the needs of a range of food and beverage applications

We have been designing and installing quality filtration systems for over 50 years, bringing together our experience and the needs of our worldwide customers to create a configurable range of housings that satisfy the rigorous requirements of global standards organizations. This conformance ensures that Bevliner™ T-line housings deliver safe, reliable performance and process separation consistency, from scale-up through manufacturing expansion. Bevliner™ housings comply with CE design and manufacturing standards. Customers can rely on us for their filtration processes in any production facility around the world.



Modular Design Makes It Easy to Configure

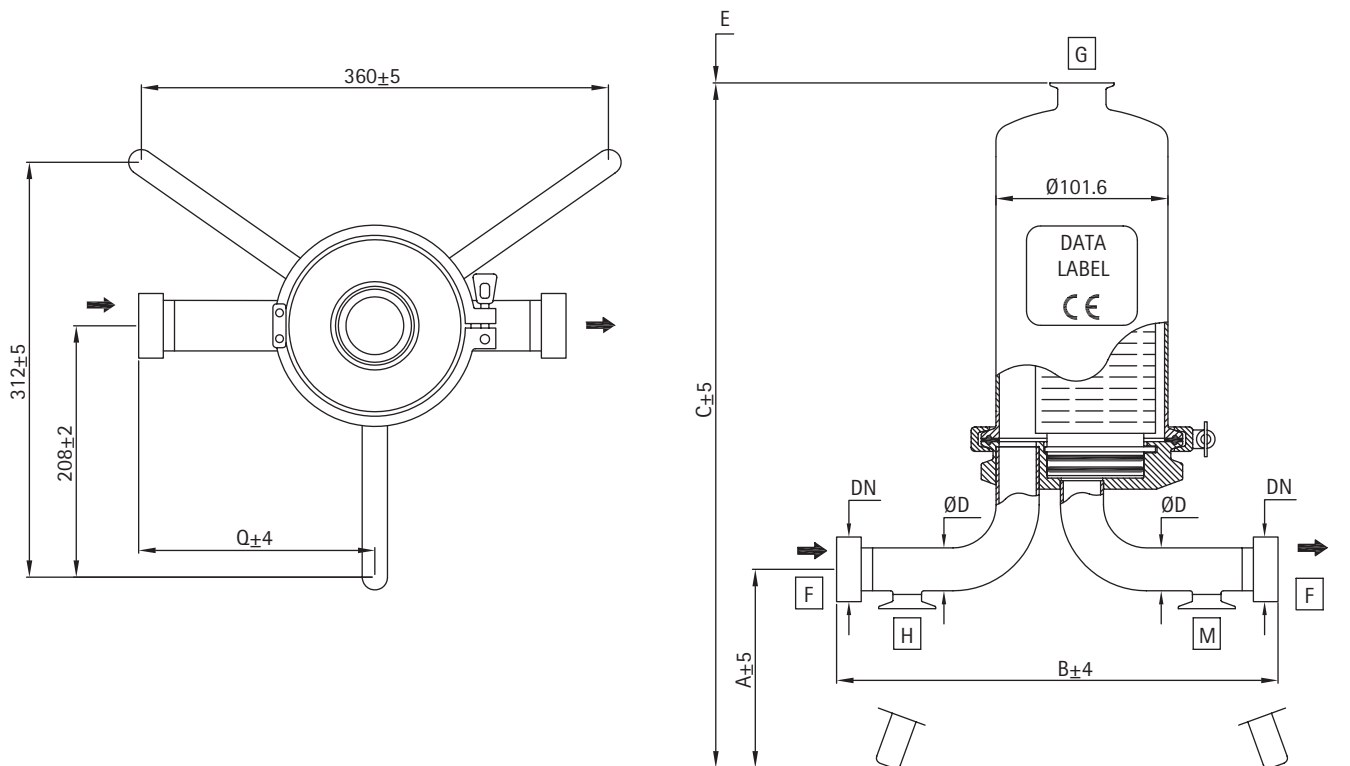
Whether you require a T-line housing for one 10-inch cartridge filter or a thirty round housing, Bevliner™ housings modular design makes it easy to meet food and beverage process needs for single and multi-round housings with various inlet and outlet connections. Bevliner™ housings has the appropriate size for both applications at any scale.

Specifications Overview

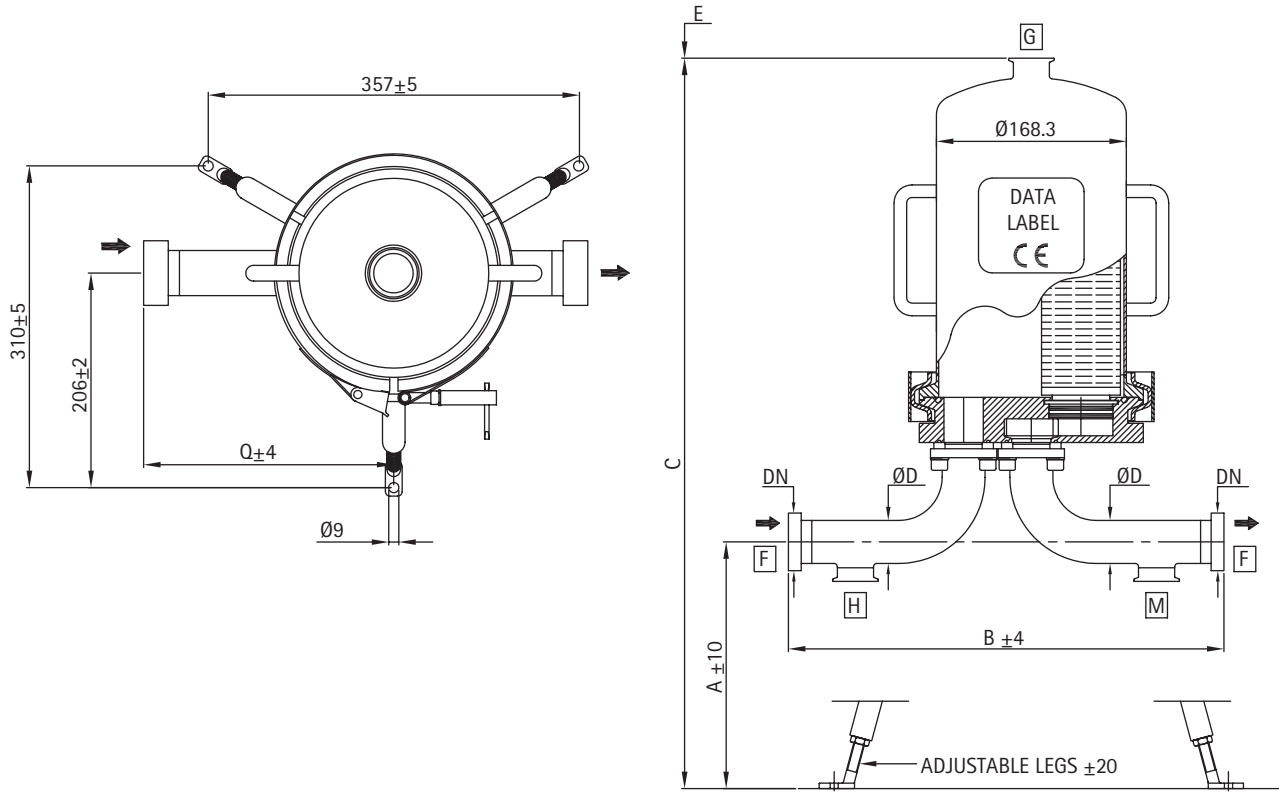
Compliance with Pressure Equipment Codes	CE Bevliner™ housings can be used at 145 Psig, T° < 99 °C (210 °F), for containing water-like product (cf Code definitions). CE compliant housings have been designed and manufactured according to the essential requirements of the European Pressure Equipment Directive 97/23/EC.
CFR Compliance	The sealing materials supplied comply with the Title 21 Code of Federal Regulations, section 177.2600 for rubber compounds or 177.1550 for fluorocarbon resin, 177.1520 for olefin polymers.
USP Class VI Compliance	All seal materials comply with USP <88> Biological Reactivity Tests for Class VI plastics.
Materials of Construction – Wetted Parts (All metal surfaces in contact with the product)	316L (EN 1.4404) stainless steel
Materials of Construction – Elastomers	Silicone
Surface finish for stainless steel wetted parts (depending on the options)	Mechanical Polish (MP), Ra ≤ 0.8µm Mechanical Polish (MP) (external)
Cartridge Code and size	Code 7 – 10-40"
Clamp	TC clamp, band clamp or bolt clamps depending on housing size

Drawings and Technical Data

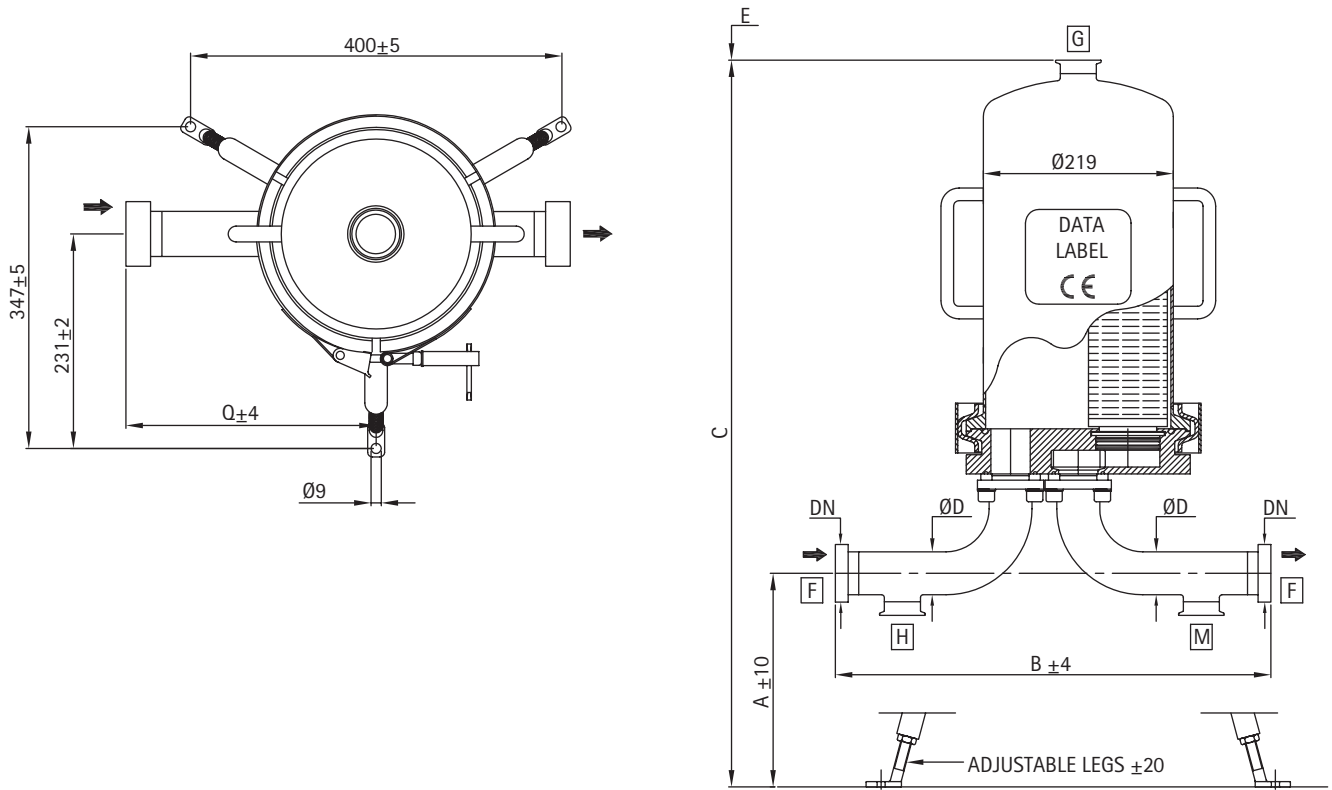
1 Round Housings



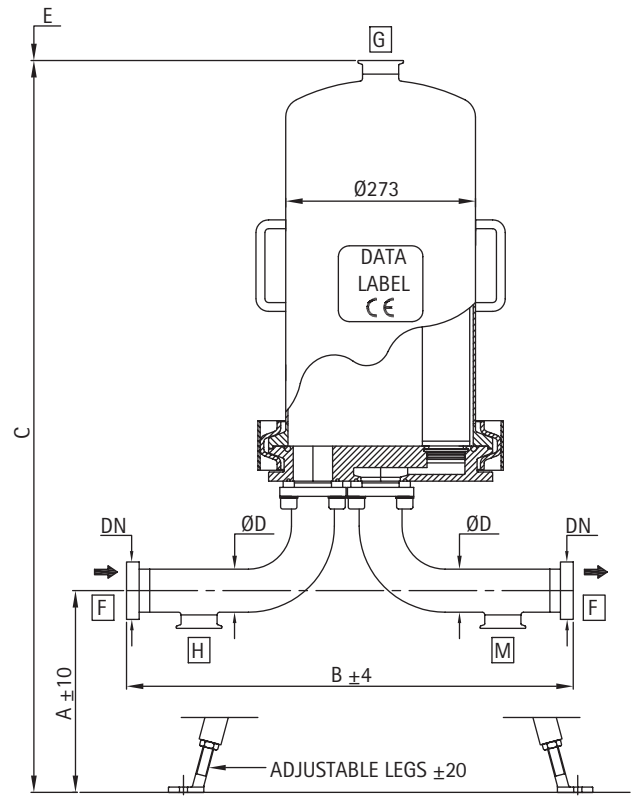
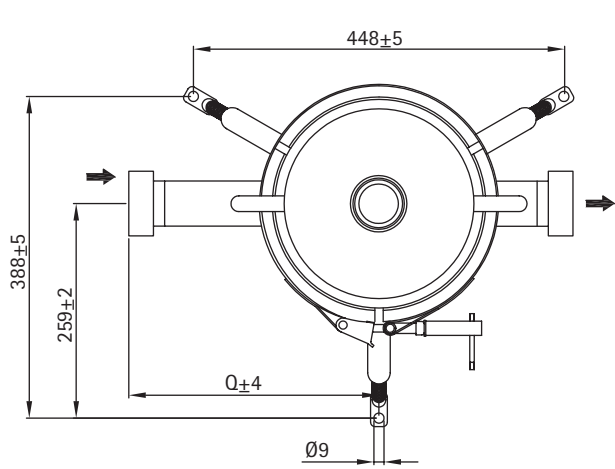
3 Round Housings



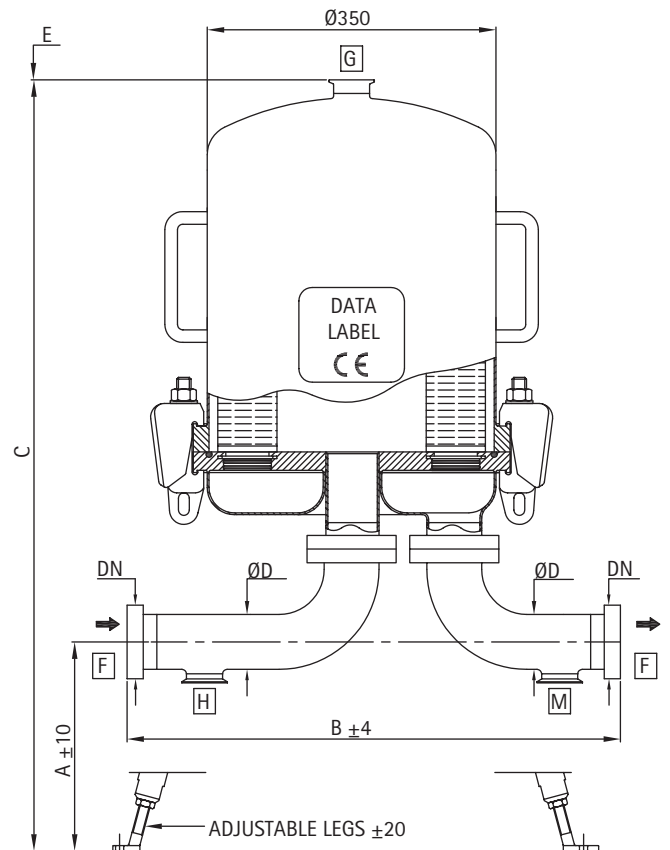
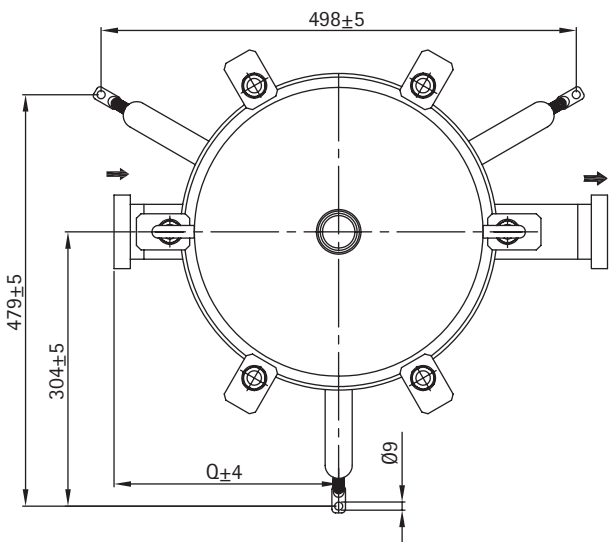
5 Round Housings



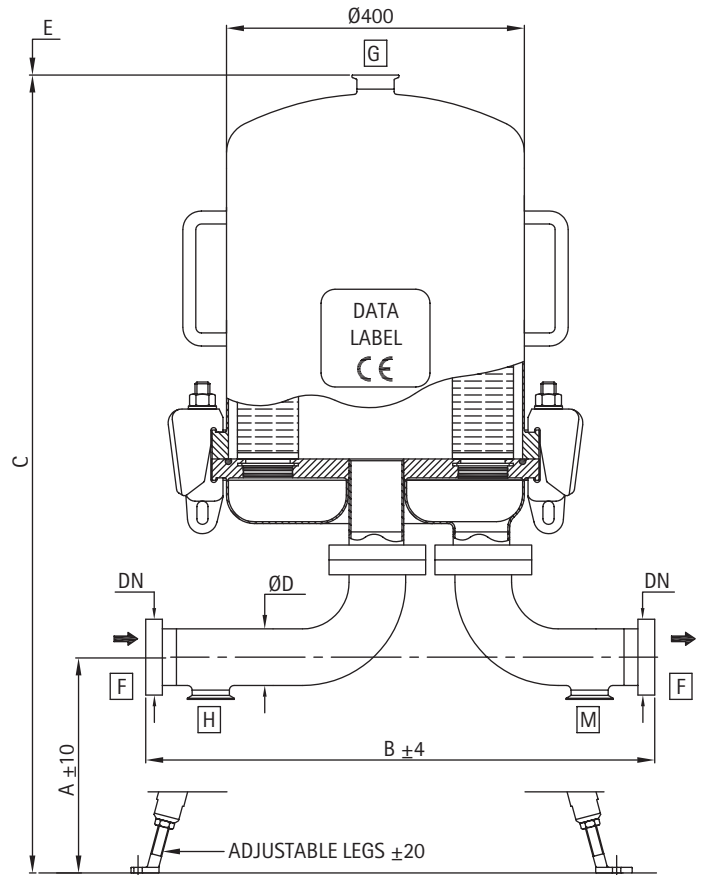
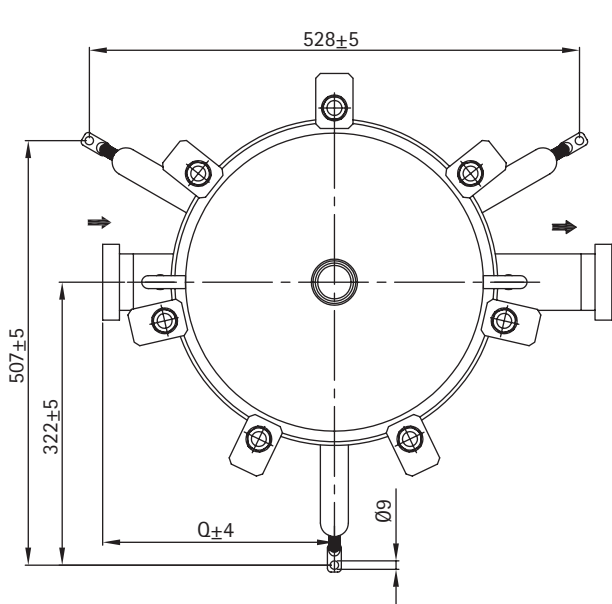
8 Round Housings



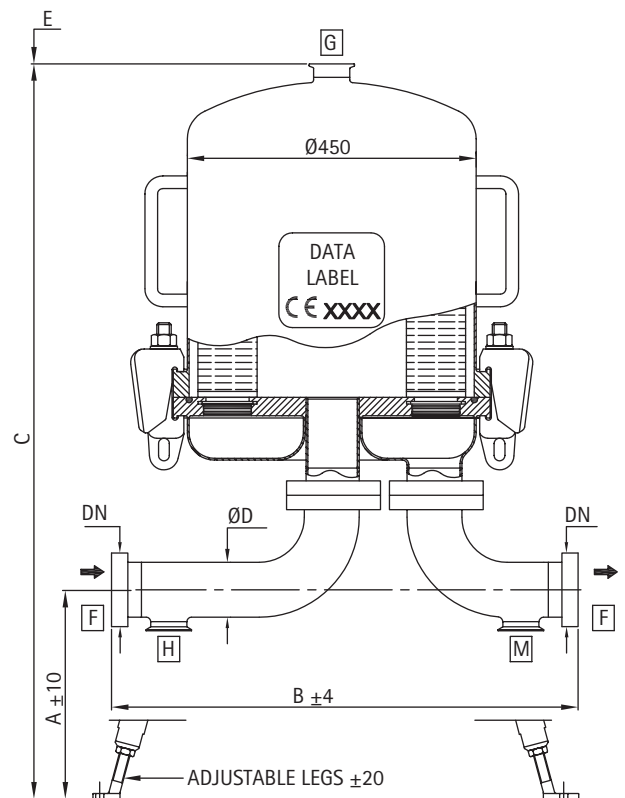
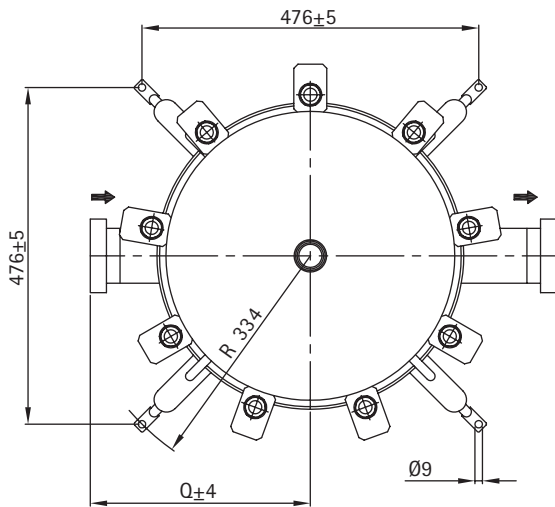
12 Round Housings



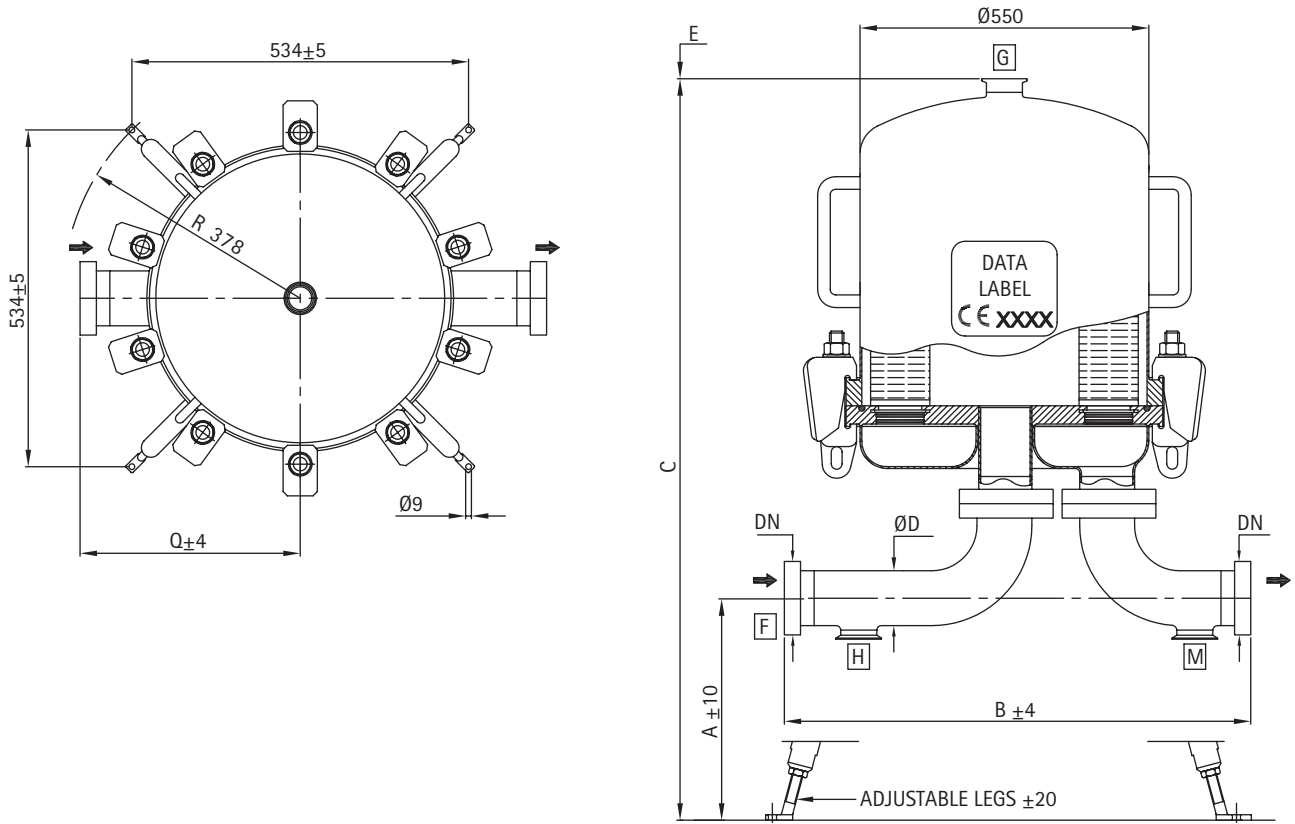
18 Round Housings



24 Round Housings



30 Round Housings



Technical Data

Number of Cartridges	1, 3, 5	8	12	18	24	30
Vessel Range	Sanitary					
Certification	CE PED 97/23/CE					
Fluid Group	1-2 (dangerous and not)					
Hazard Category	I					II
Test Pressure (PT)	14.5 bar		13.0 bar	11.5 bar		
Vessel Material	316L / 1.4404					
Seals Material	Silicone FDA BGA approved					
External Finishing	Mechanical polishing					
Vent Connection G	Clamp 1.5"					
Drain Connection H	1 rd: clamp 1.0"; 3/5 rds: clamp 1.5"		Clamp 1.5"			
Drain Connection M	1 rd: Clamp 1.0"; 3/5 rds: clamp 1.5"		Clamp 1.5"			
Internal Roughness	RA ≤ 0.8 micron					
Internal Finishing	Mechanical polishing					

Weights and Dimensions

Cartridge Height (inches)	10	20	30	40	10	20	30	40
Vessel Type	1 Round				12 Rounds			
C (mm)	800	1050	1300	1550	930	1180	1430	1680
E (mm)	300	550	800	1050	290	540	790	1040
Total Vessel Volume (L)	3	4.8	6.7	8.6	41	66	89	113
Integrity Test Volume (L)	2	3.1	4.2	5.3	25	39	53	67
Bowl Weight (kg)	2	3.3	4.6	5.9	10	14.5	19	23.5
Total Net Weight (kg)	7	8.2	9.4	10.6	58	62	66	70
Packaging Size (cm)	30 x 27 x 112	30 x 27 x 112	30 x 27 x 112	30 x 27 x 127	54 x 53 x 75	54 x 53 x 100	54 x 53 x 125	54 x 53 x 150
Total Weight Packed (kg)	8	9.5	11	13.0	63	67	71	76
Vessel Type	3 rounds				18 rounds			
Cartridges Height (inches)	10	20	30	40	10	20	30	40
C (mm)	810	1060	1310	1560	950	1200	1450	1700
E (mm)	290	540	790	1040	290	540	790	1040
Total Vessel Volume (L)	3	4.8	6.7	8.6	54	85	115	146
Integrity Test Volume (L)	2	3.1	4.2	5.3	31	47	64	80
Bowl Weight (kg)	2	3.3	4.6	5.9	12	17	22	27
Total Net Weight (kg)	7	8.2	9.4	10.6	59	63	68	74
Packaging Size (cm)	40 x 40 x 75	40 x 40 x 100	40 x 40 x 116	40 x 40 x 138	59 x 58 x 78	59 x 58 x 103	59 x 58 x 128	59 x 58 x 153
Total Weight Packed (kg)	8	9.5	11	13	64	68	74	80
Vessel Type	5 rounds				24 rounds			
Cartridges Height (inches)	10	20	30	40	10	20	30	40
C (mm)	825	1075	1325	1575	975	1225	1475	1725
E (mm)	290	540	790	1040	290	540	790	1040
Total Vessel Volume (L)	11	20	29.1	38.2	73	112	151	190
Integrity Test Volume (L)	6.6	11.7	16.8	21.8	40	60	80	100
Bowl Weight (kg)	5.3	7.5	10.2	12.9	15	20	25	30
Total Net Weight (kg)	18	20	22	24	85	90	95	100
Packaging Size (cm)	45 x 33 x 75	45 x 33 x 100	45 x 33 x 118	45 x 33 x 143	64 x 63 x 80	64 x 63 x 105	64 x 63 x 130	64 x 63 x 155
Total Weight Packed (kg)	24	26	28	30	92	98	103	108
Vessel Type	8 rounds				30 rounds			
Cartridges Height (inches)	10	20	30	40	10	20	30	40
C (mm)	846	1096	1346	1596	1000	1250	1500	1750
E (mm)	290	540	790	1040	290	540	790	1040
Total Vessel Volume (L)	21.3	35.5	49.7	63.9	118	176	235	293
Integrity Test Volume (L)	14.4	22.2	30	37.8	70	105	139	173
Bowl Weight (kg)	7	10	13	16.0	28	38	48	58
Total Net Weight (kg)	27	30	33	36.0	93	101	109	117
Packaging Size (cm)	50 x 40 x 75	50 x 40 x 100	50 x 40 x 118	50 x 40 x 143	78 x 100 x 80	78 x 100 x 105	78 x 100 x 130	78 x 100 x 155
Total Weight Packed (kg)	30	34	38	42	112	121	131	140

Working conditions *continued*

Fluid Group	State	Temperature (°C)	Max Pressure Bar, psi (cm ²)			
			10"	20"	30"	40"
1 Round						
Dangerous	Liquid	0-40	10.0 (145.04)			
Dangerous	Liquid	150	7.5 (108.78)			
Dangerous	Gas/Vapor	0-40	10.0 (145.04)	10.0 (145.04)	7.4 (107.33)	5.8 (84.12)
Dangerous	Gas/Vapor	150	7.5 (108.78)	7.5 (108.78)	7.4 (107.33)	5.8 (84.12)
Not Dangerous	Liquid	0-40	10.0 (145.04)			
Not Dangerous	Liquid	150	7.5 (108.78)			
Not Dangerous	Gas/Vapor	0-40	10.0 (145.04)			
Not Dangerous	Gas/Vapor	150	7.5 (108.78)			
Integrity Test			10.0 (145.04)			
3 Rounds						
Dangerous	Liquid	0-40	10.0 (145.04)			
Dangerous	Liquid	150	7.5 (108.78)			
Dangerous	Gas/Vapor	0-150	6.8 (98.63)	3.9 (56.56)	2.8 (40.61)	2.1 (30.46)
Not Dangerous	Liquid	0-40	10.0 (145.04)			
Not Dangerous	Liquid	150	7.5 (108.78)			
Not Dangerous	Gas/Vapor	0-40	10.0 (145.04)			
Not Dangerous	Gas/Vapor	150	7.5 (108.78)			
Integrity Test			10.0 (145.04)			
5 Rounds						
Dangerous	Liquid	0-40	10.0 (145.04)			
Dangerous	Liquid	150	7.5 (108.78)			
Dangerous	Gas/Vapor	0-150	4.5 (65.27)	2.4 (34.81)	1.7 (24.66)	1.3 (18.85)
Not Dangerous	Liquid	0-40	10.0 (145.04)			
Not Dangerous	Liquid	150	7.5 (108.78)			
Not Dangerous	Gas/Vapor	0-40	10.0 (145.04)	9.9 (143.59)	6.8 (98.63)	5.2 (75.42)
Not Dangerous	Gas/Vapor	150	7.5 (108.78)		6.8 (98.63)	5.2 (75.42)
Integrity Test			10.0 (145.04)			
8 Rounds						
Dangerous	Liquid	0-40	10.0 (145.04)			
Dangerous	Liquid	150	7.5 (108.78)			
Dangerous	Gas/Vapor	0-150	2.3 (33.36)	1.4 (20.31)	1.0 (14.50)	0.7 (10.15)
Not Dangerous	Liquid	0-40	10.0 (145.04)			
Not Dangerous	Liquid	150	7.5 (108.78)			
Not Dangerous	Gas/Vapor	0-40	9.4 (136.34)	5.6 (81.22)	4.0 (58.01)	3.1 (44.96)
Not Dangerous	Gas/Vapor	150	7.5 (108.78)	5.6 (81.22)	4.0 (58.01)	3.1 (44.96)
Integrity Test			10.0 (145.04)			
12 Rounds						
Dangerous	Liquid	0-40	9 (130.53)			
Dangerous	Liquid	150	7 (101.53)			
Dangerous	Gas/Vapor	0-150	1.2 (17.40)	0.7 (10.15)	0.5 (7.25)	0.5 (7.25)
Not Dangerous	Liquid	0-40	9 (130.53)			
Not Dangerous	Liquid	150	7 (101.53)			
Not Dangerous	Gas/Vapor	0-150	4.8 (69.62)	3 (43.51)	2.2 (31.91)	1.7 (24.66)
Integrity Test			7.6 (110.23)			

Working Conditions *continued*

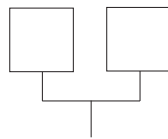
Fluid Group	State	Temperature (°C)	Max Pressure Bar, psi (cm ²)			
			10"	20"	30"	40"
18 Rounds						
Dangerous	Liquid	0-40	8 (116.03)			
Dangerous	Liquid	150	6.2 (89.92)			
Dangerous	Gas/Vapor	0-150	0.9 (13.05)	0.5 (7.25)	0.5 (7.25)	0.5 (7.25)
Not Dangerous	Liquid	0-40	8 (116.03)			
Not Dangerous	Liquid	150	6.2 (89.92)			
Not Dangerous	Gas/Vapor	0-150	3.6 (52.21)	2.3 (33.36)	1.7 (24.66)	1.3 (18.85)
Integrity Test			6.4 (92.82)	4.2 (60.92)	3.1 (44.96)	2.5 (36.26)
24 Rounds						
Dangerous	Liquid	0-40	8 (116.03)			
Dangerous	Liquid	150	6.2 (89.92)			
Dangerous	Gas/Vapor	0-150	2.7 (39.16)	1.7 (24.66)	1.3 (18.85)	1 (14.50)
Not Dangerous	Liquid	0-40	8 (116.03)			
Not Dangerous	Liquid	150	6.2 (89.92)			
Not Dangerous	Gas/Vapor	0-40	8 (116.03)			
Not Dangerous	Gas/Vapor	150	6.2 (89.92)			
Integrity Test			8 (116.03)			
30 Rounds						
Dangerous	Liquid	0-40	8 (116.03)			
Dangerous	Liquid	150	6.2 (89.92)			
Dangerous	Gas/Vapor	0-150	1.6	1.1 (15.95)	0.8 (11.6)	0.6 (8.7)
Not Dangerous	Liquid	0-40	8 (116.03)			
Not Dangerous	Liquid	150	6.2 (89.92)			
Not Dangerous	Gas/Vapor	0-40	8 (116.03)	5.6 (81.22)	4.2 (60.92)	3.4 (49.31)
Not Dangerous	Gas/Vapor	150	6.2 (89.92)	5.6 (81.22)	4.2 (60.92)	3.4 (49.31)
Integrity Test			8 (116.03)			
					7.1 (102.98)	5.7 (82.67)

Ordering Information

Bevliner™ Matrix and Options Availability and Dimensions

Catalogue No.

H2FBSH



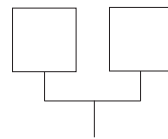
Number of Cartridges

01
03
05
08
12
18
24
30



Height (inches)

1 = 10"
2 = 20"
3 = 30"
4 = 40"



I / O Connection Size

D
D2
D3
D4
D5
D6
T
T2
T3
T4
T5
T6

I/O Connection Size Dimensions and availability

Rounds	Digits for the part numbering system above	DN	A	B	Q	ØD
1 and 3						
☐ DIN 11851 Male Part	D	40	340	426	243	38.1
☐ Clamp TC ISO 2852	T	1.5"	340	385	236	38.1
5						
☐ DIN 11851 Male Part	D2	40	340	446	263	38.1
	D3	50	310	490	285	50.8
☐ Clamp TC ISO 2852	T2	1.5"	340	406	243	38.1
	T3	2.0"	310	446	263	50.8
8						
☐ DIN 11851 Male Part	D3	50	310	516	311	50.8
☐ Clamp TC ISO 2852	T3	2.0"	310	472	289	50.8
12						
☐ DIN 11851 Male Part	D3	50	350	586	258	50.8
	D4	65	326	627	252	63.5
	D5	80	310	615	246	85.0
☐ Clamp TC ISO 2852	T3	2.0"	350	544	236	50.8
	T4	2.5"	326	573	225	63.5
	T5	3.0"	298	629	253	76.2
18						
☐ DIN 11851 Male Part	D4	65	325	684	292	63.5
	D5	80	310	662	276	85.0
	D6	100	292	684	272	101.6
☐ Clamp TC ISO 2852	T4	2.5"	325	630	265	63.5
	T5	3.0"	297	646	253	76.2
	T6	4.0"	292	612	236	101.6

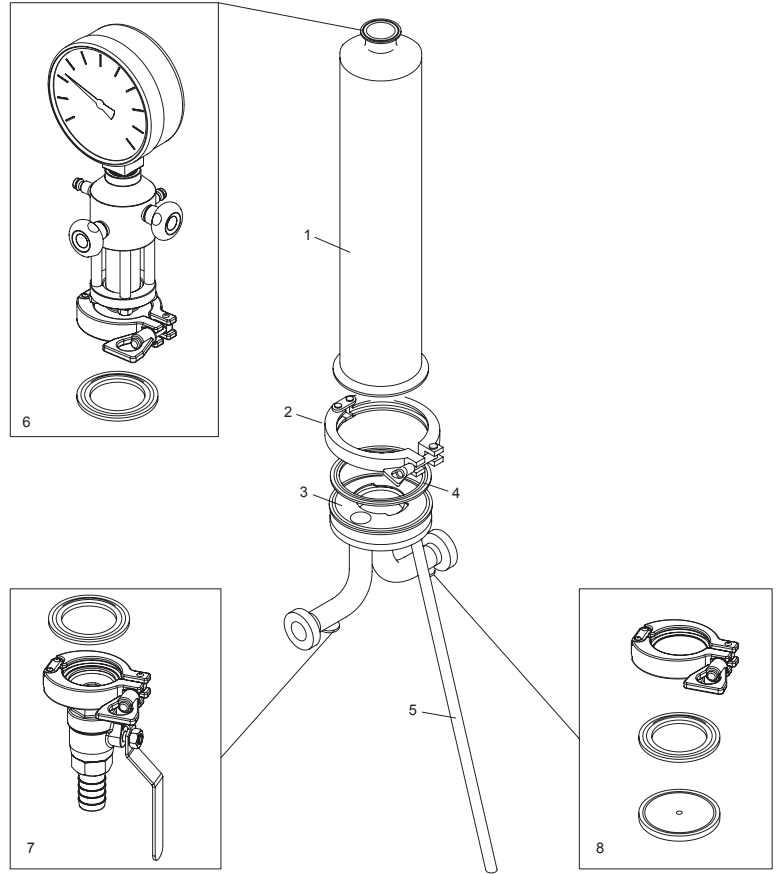
I/O Connection Size Dimensions and availability *continued*

Rounds	Digits for the part numbering system above	DN	A	B	Q	ØD
24						
☒ DIN 11851 Male Part	D5	80	310	696	296	85.0
	D6	100	292	718	292	101.6
☒ Clamp TC ISO 2852	T5	3.0"	272	660	253	76.2
	T6	4.0"	292	640	256	101.6
30						
☒ DIN 11851 Male Part	D5	80	310	792	357	85.0
	D6	100	292	814	352	101.6
☒ Clamp TC ISO 2852	T5	3.0"	272	766	323	76.2
	T6	4.0"	292	742	316	101.6

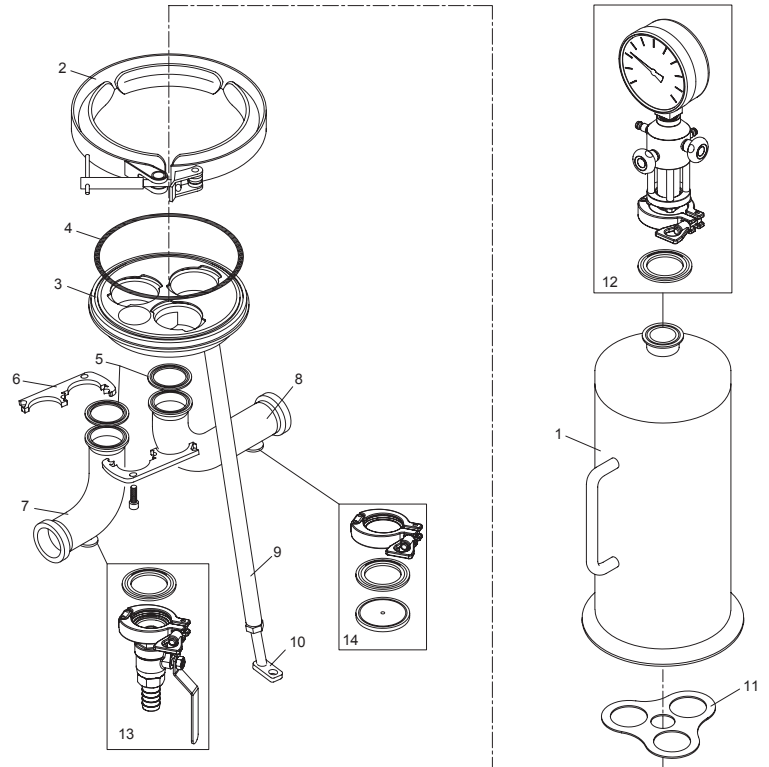
Spare Parts and Accessories

Description	Tag No. 1 Round	3 Rounds	5 Rounds	8 Rounds	12 Rounds	18 Rounds	24 rounds	30 rounds	Catalogue No.
Vent + Sight Glass + Pressure Gauge + 1½" Silicone Gasket + 1½" TC Clamp	6	12	12	12	12	12	11	11	601310010
Ball Valve + Hose Adapter + 1½" Silicone Gasket + 1½" TC Clamp	7	13	13	13	13	13	12	12	602300150
Solid End Cap + 1½" Silicone Gasket + 1½" TC Clamp	8	14	14	14	14	14	13	13	602390038
Gasket Clamp 2" – PTFE			5	5					80022P
Gasket Clamp 3" PTFE					8.1	8.1			80024P
Gasket Clamp 1.5" – PTFE		5							80057P
O-Ring Ø7.00 ID=342.30 – Silicone					3				80783S
O-Ring Ø5.34 ID=110.50 – Silicone						3			80784S
O-Ring Ø7.00 ID=443.40 – Silicone							3		80785S
Gasket Clamp 4" – Silicone	4								80788S
O-Ring Ø5.34 ID=158.11 – Silicone		4							80789S
O-Ring Ø5.34 ID=208.91 – Silicone			4						80790S
O-Ring Ø5.34 ID=266.06 – Silicone				4					80791S

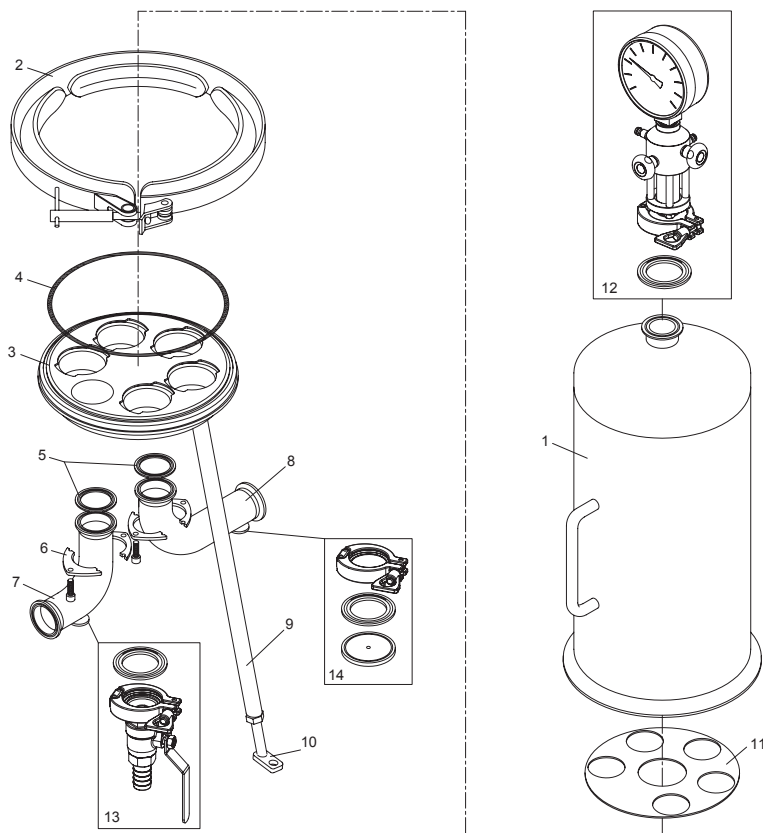
1 Round Housings



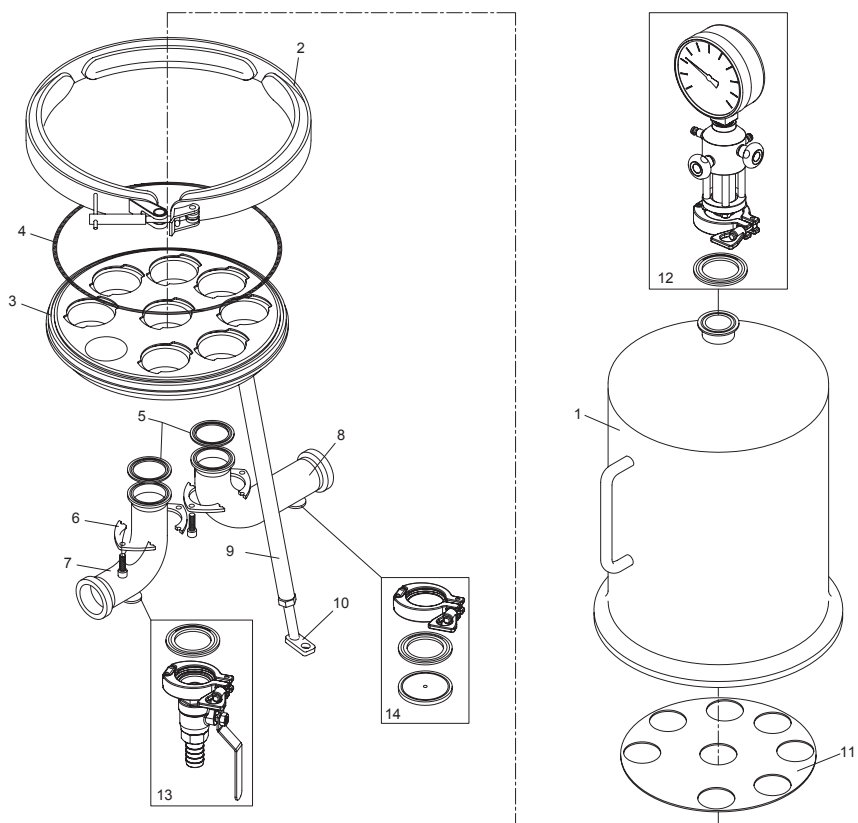
3 Round Housings



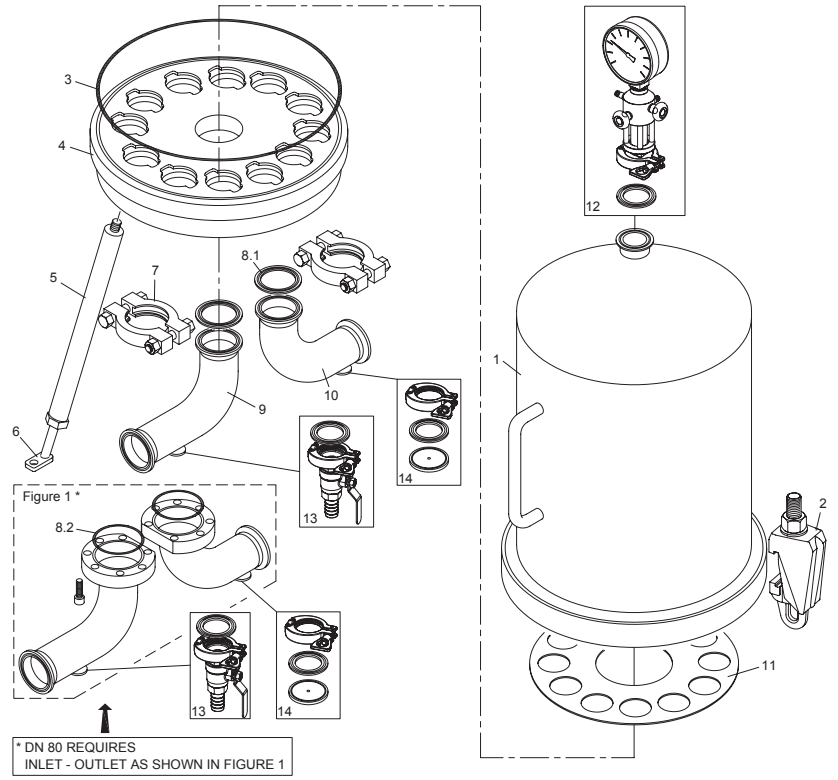
5 Round Housings



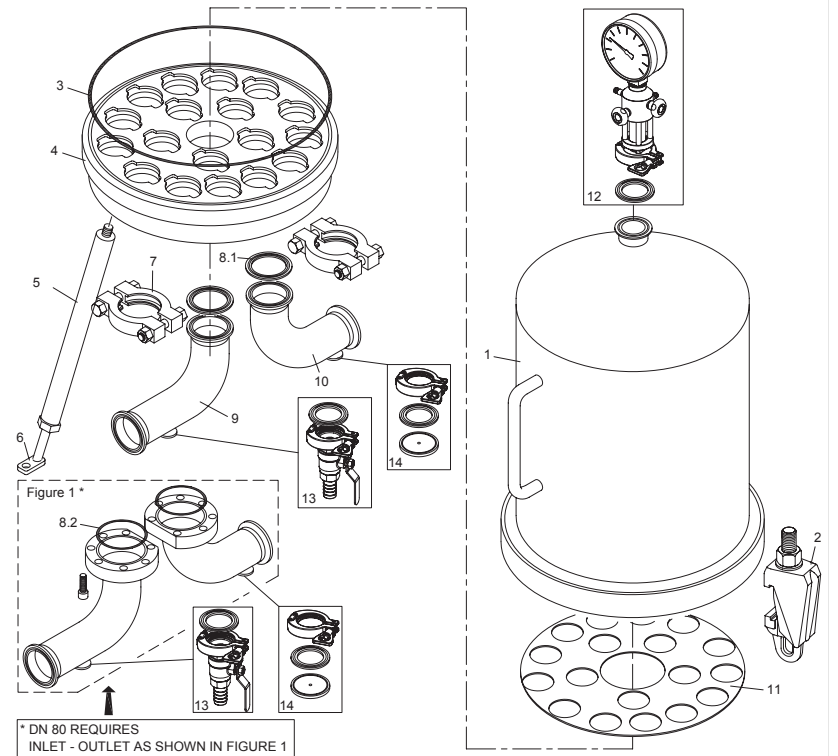
8 Round Housings



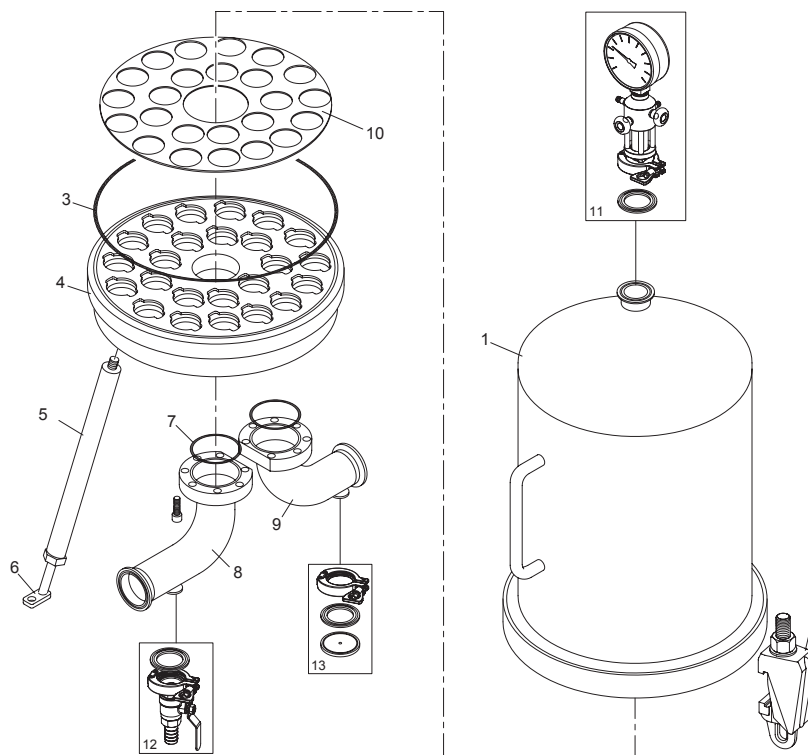
12 Round Housings



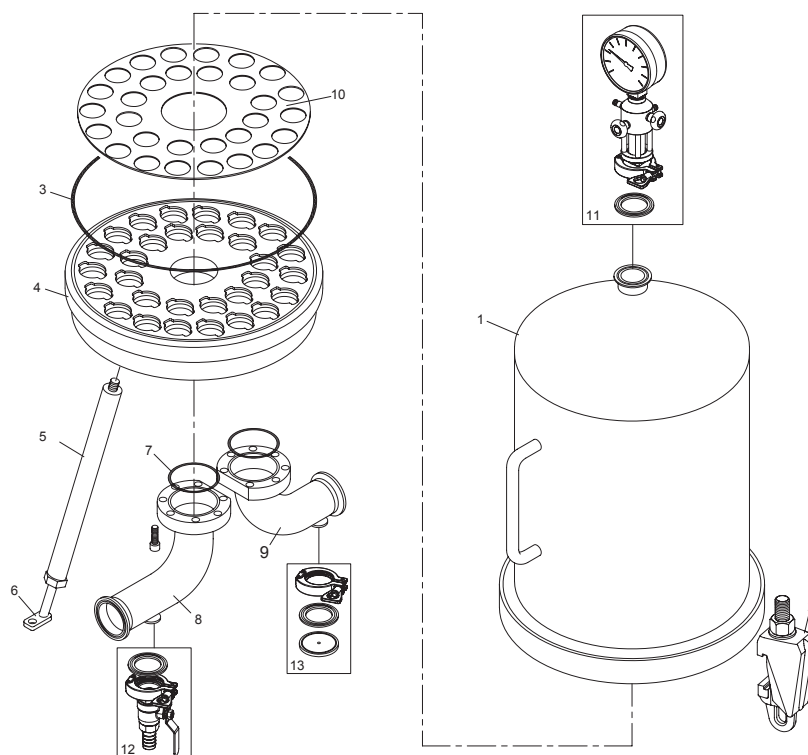
18 Round Housings



24 Round Housings



30 Round Housings



Should you need anything outside of our standard range, our extensive custom capabilities allow for more options upon request.



To place an order or receive technical assistance

In Europe, please call Customer Service:

France: 0825 045 645

Germany: 069-86798021

Italy: 848 845 645

Spain: 901 516 645 Option 1

United Kingdom: 0870 900 4645

For other countries across Europe,
please call: +44 (0) 115 943 0840

Or visit www.merckmillipore.com/offices

For Technical Service visit:

www.merckmillipore.com/techservice



www.merckmillipore.com